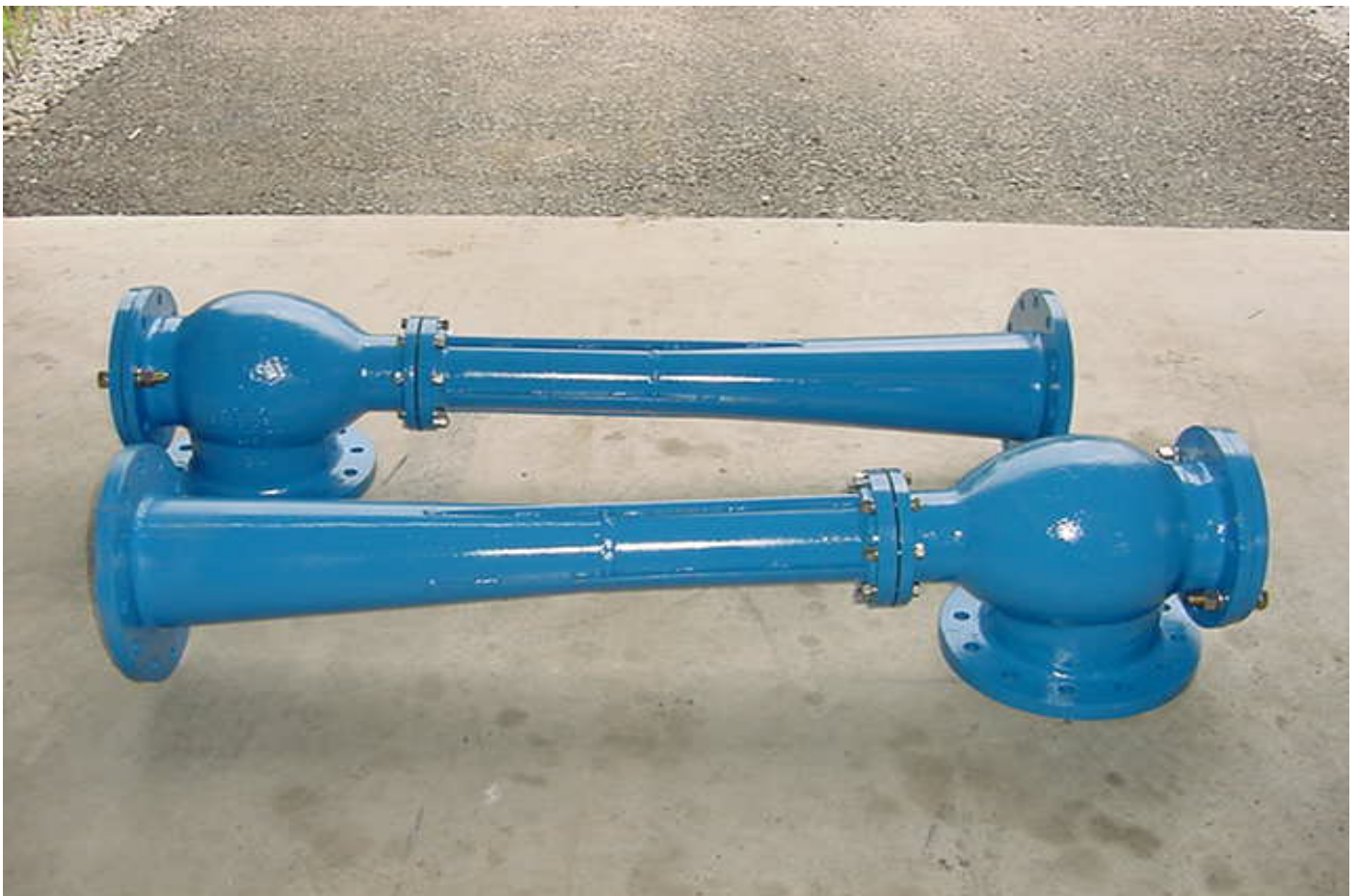
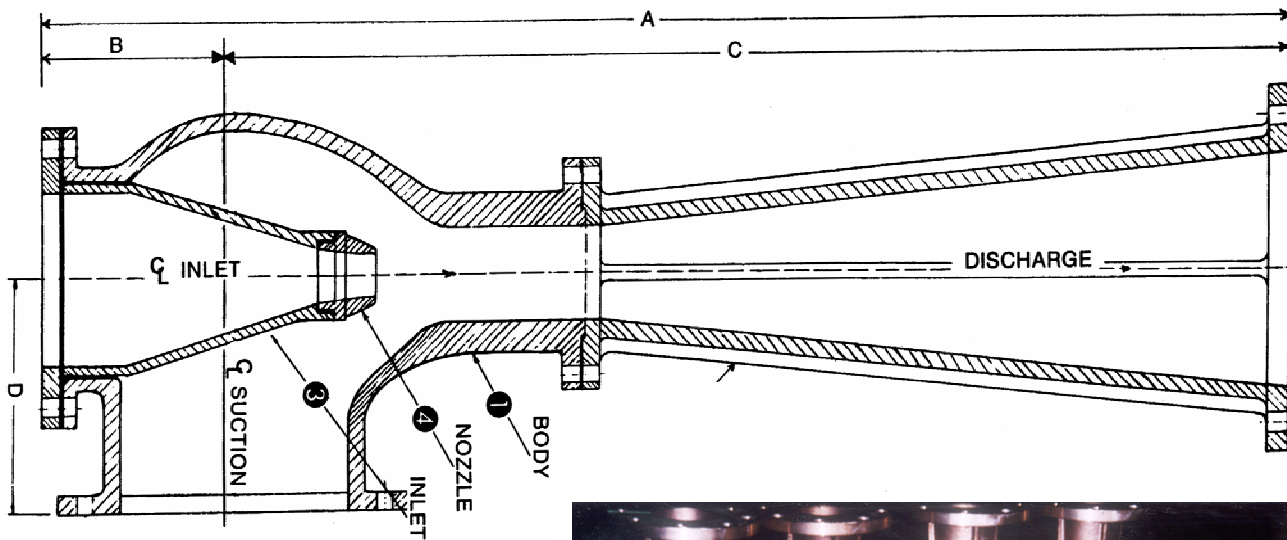


VITA MOTIVATOR CO.

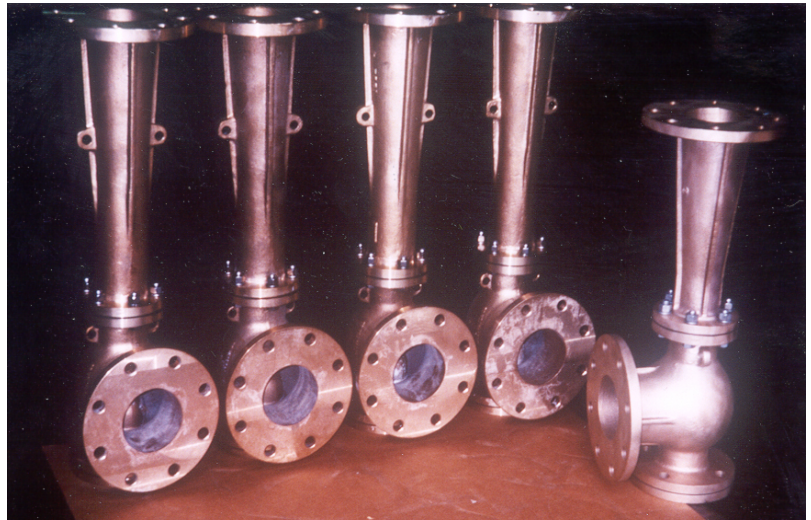
**Stripping Ejectors
Bilge – Ballast – Cargo**



Pump it dry with  Ejectors and Eductors

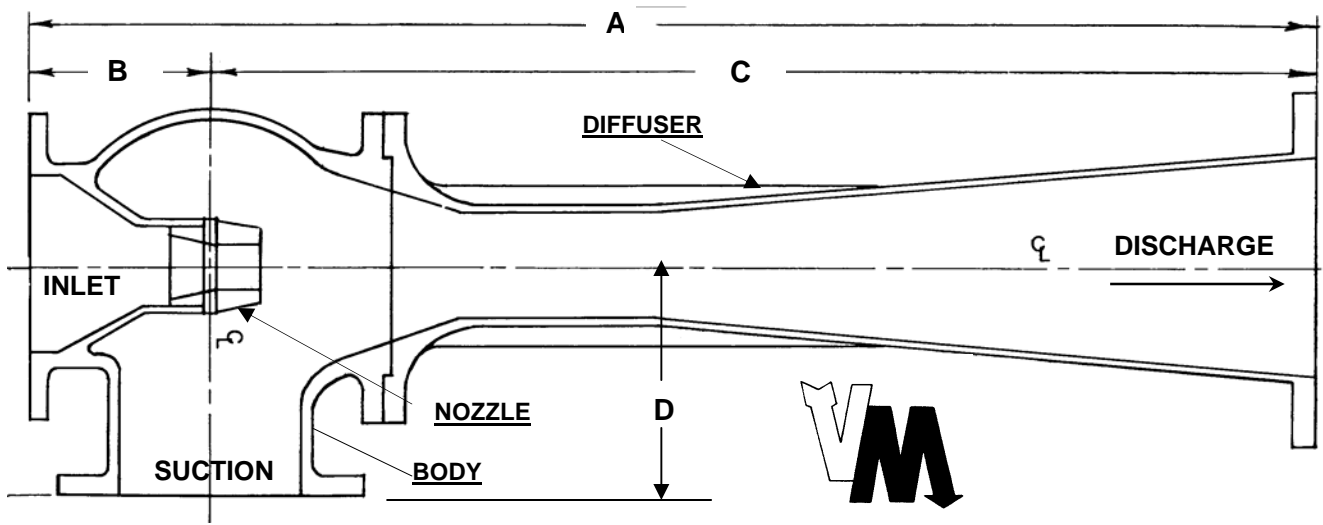


STRIPPING EJECTORS



<u>Model No.</u>	<u>1802-4</u>	<u>1802-4SP</u>	<u>1802-4LX</u>	<u>1802-6S</u>	<u>1802-6L</u>	<u>1802-6LX</u>
Capacity M3/H	57	100	166	150	160	200
Inlet	2½"	2½"	2½"	4	4	4
Suction	4	4	4	6	6	6
Discharge	4	4	4	6	6	6
"A"	584	700	838	940	1079	1295
"B"	127	127	127	178	178	178
"C"	457	583	711	762	901	1117
"D"	140	140	140	178	133	178
Weight	32	41	50	86	113	140
<u>Body Material</u>	<u>Bronze</u>	<u>Bronze</u>	<u>Bronze</u> <u>Stainless</u> <u>Carbon Steel</u>	<u>Bronze</u>	<u>Bronze</u> <u>Stainless</u> <u>Carbon Steel</u>	<u>Bronze</u> <u>Stainless</u> <u>Carbon Steel</u>
<u>Nozzle Material</u>	Monel or Stainless	Monel or Stainless	Monel or Stainless	Monel or Stainless	Monel or Stainless	Monel or Stainless

PUMP IT DRY with VM EDUCTORS & EJECTORS



VM STRIPPING EJECTORS for Bilge – Ballast – Cargo

Permanently installed ejectors are used to strip ballast, bilge, cargo or other spaces that regularly have to be pumped out. The VM 1802 Series are high suction volume jet pumps. Applications include stripping and gas freeing Cargo Tanks, Bilges, Spud Cans, main & secondary drainage, pumping cement and drilling mud.

These VM ejectors can be fitted with tungsten carbide throat linings for severe wear and to prevent erosion when pumping sand. Standard construction uses a Bronze body with a monel nozzle. Some models are also available in 316 Stainless Steel and Carbon Steel. All VM Ejectors are customized to fit the requirements of each application.

<u>Model No.</u>	<u>1802-8</u>	<u>1802-8X</u>	<u>1802-10</u>	<u>1802-10LX</u>	<u>1802-12</u>	<u>1802-14L</u>	<u>1802-18</u>
<u>Capacity</u> <u>M3H</u>	250	340	636	400	863	1135	1362
<u>Inlet</u>	6	6	8	6	10	10	12
<u>Suction</u>	8	8	8	8	10	10	14
<u>Discharge</u>	8	8^^	10	10	12	14	18
<u>“A”</u>	1067	1384	1791	1559	2083	2611	2641
<u>“B”</u>	178	178	203	178	229	229	241
<u>“C”</u>	889	1206	1587	1381	1853	2382	2400
<u>“D”</u>	200	200	254	200	267	267	324
<u>Weight</u>	130	147	236	160	284	408	590
<u>Body Material</u>	<u>Bronze</u>	<u>Bronze</u> <u>Stainless</u> <u>Carbon Steel</u>	<u>Bronze</u> <u>Stainless</u> <u>Carbon Steel</u>	<u>Bronze</u> <u>Stainless</u> <u>Carbon Steel</u>	<u>Bronze</u> <u>Stainless</u> <u>Carbon Steel</u>	<u>Bronze</u> <u>Stainless</u> <u>Carbon Steel</u>	<u>Bronze</u> <u>Stainless s</u> <u>Carbon Steel</u>
<u>Nozzle Material</u>	Monel or Stainless	Monel or Stainless	Monel or Stainless	Monel or Stainless	Monel or Stainless	Monel or Stainless	Monel or Stainless

^^ can be supplied with a 9" or 10" discharge

PUMP IT DRY with VM EDUCTORS & EJECTORS



1802-8"X – 316 Stainless Steel Eductors with 316 SS Wear Lining
Mud System Noble Drilling – Offshore Oil Platform

Typical Materials

- Body: Bronze
Carbon Steel
Stainless Steel
- Nozzle: Monel
316 Stainless
- Wear Sleeve: Tungsten Carbide
316 Stainless Steel

Applications

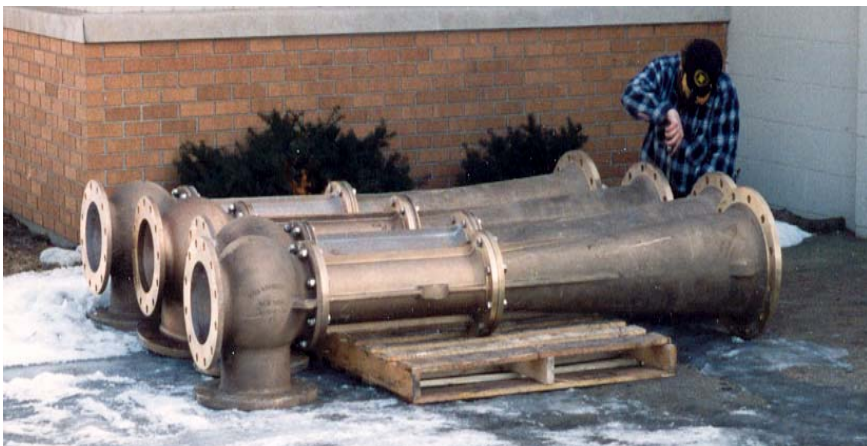
- Cargo Oil Ejectors
- Ballast Water Ejectors
- Bilge Ejectors
- Drilling Mud Pumping
- Spud Can Drainage
- Main Drainage Pumping



1802-10" LX Carbon Steel Eductor – Drilling Rig # 226 QATAR
Global Sante Fe

Features

- Maintenance Free
- No moving parts
- Will not lose suction while motive fluid pressure is maintained.
- VM Ejectors are supplied to meet the requirements of each application.
- Available with removable wear lining for abrasive fluids.



1802-10" L Bronze Eductors – Tanker Conversion – Bilge Stripping
Canada Steamship Lines – CSL 'THEVENARD'

Vita Motivator Co., Inc
PO Box 8139
Englewood, NJ 07631

Tel: 201-567-1151
Fax: 201-567-1152

www.vitamotivator.com
michaels.greene@att.net